

Continuous top track "SLP-TRK" Deflection Adjusting top track By Angeles Metal Systems or Equivalent installed per Manf. Recommendations

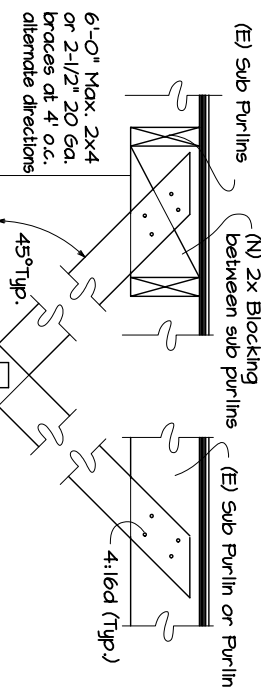
Bracket to allow for deflection

Partition Standards For Commercial Tenant Improvements

1. Minimum partition components to be per steel and wood stud tables below with 1/2" drywall on both sides. 5/8" type "X" drywall is required for 1 hour fire resistive construction.
2. Minimum bracing shall consist of 2-1/2" metal studs installed at 4' on center, 45 degrees or less from the horizontal from top track or plate to structure above. Bracing is required where the horizontal span (perpendicular to the plane of the wall) is 8' or greater from support to support. Maximum distance from top of partition to structure above is 6'.

Full Height Mt. Stud Full Height Wood Stud

Brace Perp. to Joist
Brace Parallel to Joist



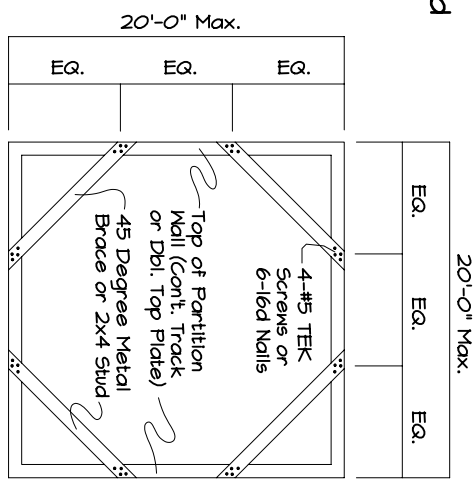
Double 2x Top Plate or 20 Ga. top track 2x Wood Studs or Metal Studs per Table

Max. Stud Height and Stud Size per Table "A"

Wood Stud Wall

2x4 PT Plate or 20 Ga. Stl. Track, Attach Plate to conc. per Table "A"

Concrete Slab

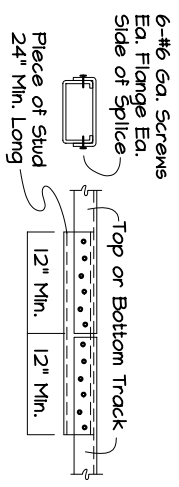


Alt. Bracing Detail

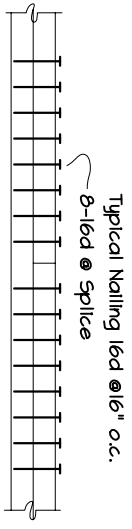
TABLE "A"-Maximum Stud Height

Stud Height	Wood Studs	Metal Studs Size	Plate Nailing
10'-0"	2x4@16"	12" o.c.	16" o.c.
10'-0"	2x4@16"	2-1/2" 25 GA	3-1/2" 25 GA
12'-0"	2x6@16"	2-1/2" 25 GA	3-1/2" 25 GA
12'-0"	2x6@16"	3-1/2" 20 GA	3-1/2" 20 GA
14'-0"	2x6@16"	3-1/2" 20 GA	3-1/2" 20 GA
-	-	3-1/2" 20 GA	2-3" o.c.
16'-0"	-	6" 24 GA	2-3" o.c.
16'-0"	-	6" 24 GA	2-0" o.c.
20'-0"	-	4" 20 GA	1-4" o.c.
20'-0"	-	5-1/2" 20 GA	1-6" o.c.
22'-0"	-	5-1/2" 18 GA	1-3" o.c.
26'-0"	-	8" 18 GA	1-0" o.c.

Western Metal Studs ICBO# 2274
Angeles Metal Systems ICBO# 1715



Steel Track Splice



Wood Top Plate Splice

Products for Power Driven Fasteners for Plate Nailing

Manufacturer	Product	ICBO No.
Ramsert/Red Head	1500, 1600 & 1900	1634
Simpson Strong Tie	PHN22 Steel Plate PHN12 Wood Plate	4546
Remington	SP125, SP300 SP SP300, SPW300 WP	5067
Hilti	0.145 dia w/ 1" Embed.	2368

All pins shall have a diameter of 0.145", and be of sufficient length to provide 1" embedment into concrete, shall be placed with 6" from plate ends and shall have 3/4" diameter steel washers.

Detail of Interior Non-Bearing Partitions Metal and Wood Stud

D-1

SHEET OF

Project Title: _____

Project Address: _____

Project Owner and Address: _____

The information provided on this sheet is a summary of specific code requirements and is provided to assist in understanding and complying with the code. Completeness of the plans and code compliance remains the responsibility of the applicant.

Date: March 24, 2000 c:\stev\handouts\alpo\dwg_d_1.dwg